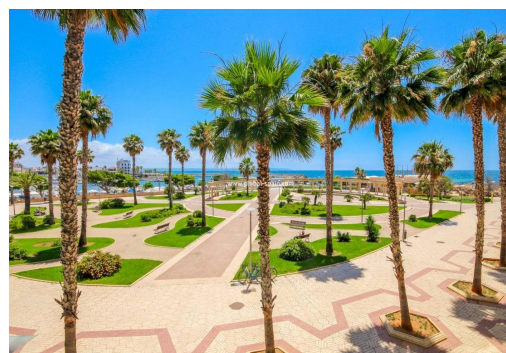
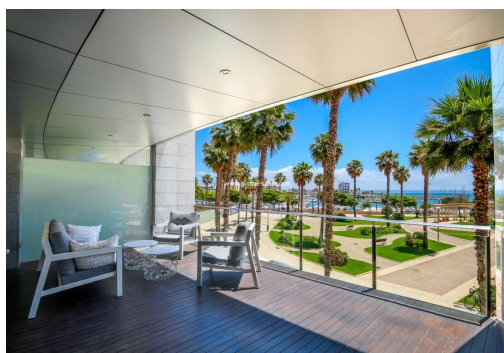
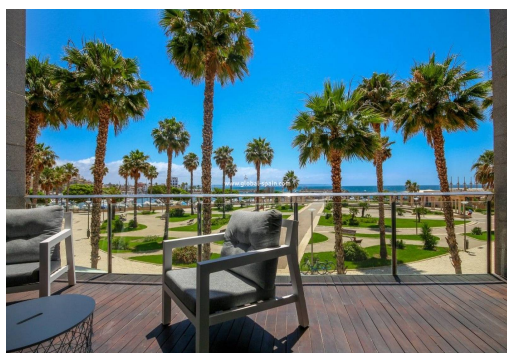




REF. IPM-79096

Resale · Villa · Santa Ponsa



4 BEDROOMS



3 BATHROOMS



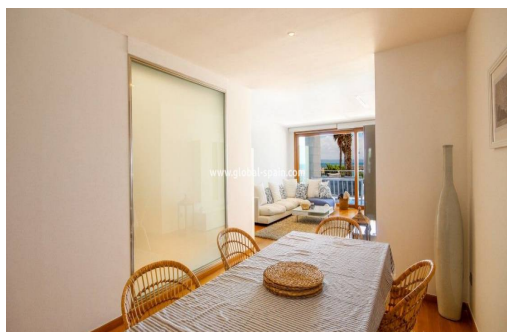
220M²



620M²



IN PROCESS



This beautiful apartment is in an absolutely unique position right next to the beach of Palma and the idyllic marina at Portixol where you can enjoy all the stunning bars and restaurants. The breathtaking sea views from the front terrace looks out onto the Palma bay with also the luxury of only being a 10 minute walk to the centre of Palma. The South East facing apartment enjoys four bedrooms with 2 ensuite and 1 shared bathroom along with a separate quest toilet. The master bedroom suite is situated at the front of the apartment with a spacious dressing room and luxury bathroom with whirlpool Bath with massage jets and walk in shower with access to the front terrace. Towards the rear of the apartment there are a further 3 beautiful double bedrooms, with one being en-suite with a bath and overbite shower and the two other bedrooms enjoying a large bathroom and one with access to the back terrace shared with the kitchen. All the bedrooms are fitte...

key features

■ Bedrooms: 4

■ Built: 220m²

■ Energy Rating: In process

■ Bathrooms: 3

■ Plot: 620m²