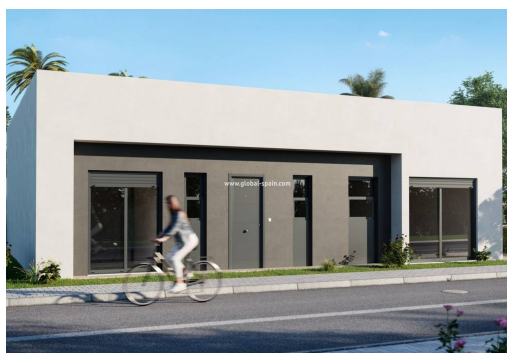




REF. PS-98172

New Build · Villa · Alhama de Murcia



4 BEDROOMS



3 BATHROOMS



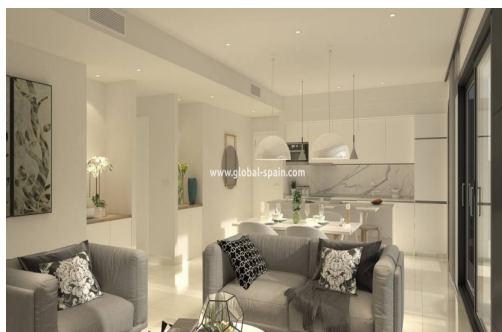
149M²



452M²



B



**MEDITERRANEAN VILLA ON THE GOLF COURSE** Villa next to the golf course in Alhama. The complex is supervised 24h/24h. You will find a commercial centre with many restaurants, shops, hairdresser, supermarket, etc. The project is about 15 minutes from the beaches of Mazarron and Murcia International Airport, and 30 minutes from the Natural Park of Sierra Espuña. Located in the heart of the Costa Cálida, between big cities like Murcia and Cartagena.

## key features

- Bedrooms: 4
- Built: 149m<sup>2</sup>
- Energy Rating: B
- Bathrooms: 3
- Plot: 452m<sup>2</sup>

## Characteristics

- Air Conditioning: Pre-Installed
- Double Bedrooms: 4
- Location: Coastal, Mountain
- Near Commercial Center
- Near Schools
- Terrace: 137 Msq.
- Beach: 18000 Meters
- garden
- Near Childrens Parks
- Near Golf / Golf Resort Property
- Solarium: Yes
- Useable Build Space: 120 Msq.