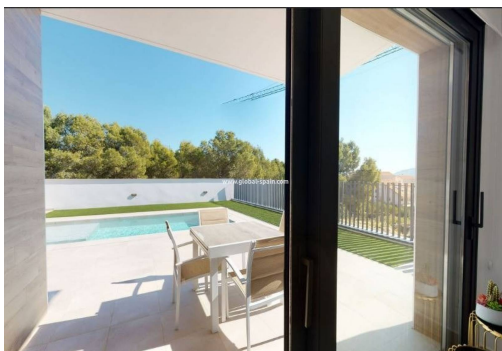
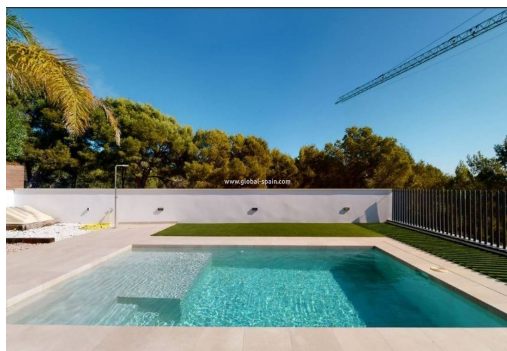


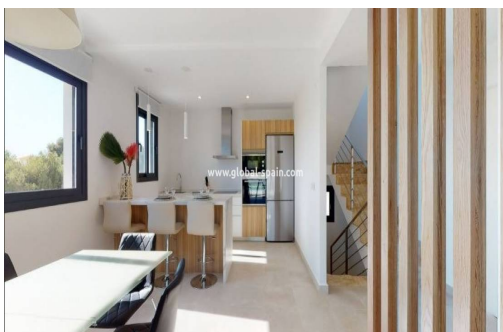


REF.

..



IN PROCESS



## key features

■ Energy Rating: In process

## Characteristics

■ Air Conditioning: Pre-Installed

■ Double Bedrooms: 3

■ garden

■ Location: Coastal, Mountain, Urbanisation

■ Near Schools

■ Private Pool

■ Terrace: 67 Msq.

■ Useable Build Space: 120 Msq.

■ Beach: 6000 Meters

■ Double garage

■ Gated

■ Near Commercial Center

■ Number of Parking Spaces: 2

■ Solarium: Yes

■ Under-Build / Basement